



### Synonym

PLAP

### Source

Rat ALPP Protein, His Tag(ALP-R52H4) is expressed from human 293 cells (HEK293). It contains AA Leu 19 - Ser 501 (Accession # [D4ADM6](#)).

Predicted N-terminus: Leu 19

### Molecular Characterization

ALPP(Leu 19 - Ser 501)  
D4ADM6 Poly-his

This protein carries a polyhistidine tag at the C-terminus.

The protein has a calculated MW of 54.4 kDa. The protein migrates as 60-65 kDa when calibrated against [Star Ribbon Pre-stained Protein Marker](#) under reducing (R) condition (SDS-PAGE) due to glycosylation.

### Endotoxin

Less than 1.0 EU per µg by the LAL method.

### Purity

>90% as determined by SDS-PAGE.

### Formulation

Lyophilized from 0.22 µm filtered solution in 20 mM Tris, 150 mM NaCl, pH7.5 with trehalose as protectant.

Contact us for customized product form or formulation.

### Reconstitution

Please see Certificate of Analysis for specific instructions.

*For best performance, we strongly recommend you to follow the reconstitution protocol provided in the CoA.*

### Storage

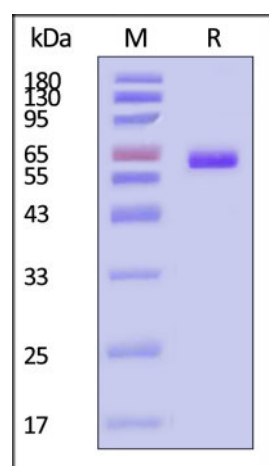
For long term storage, the product should be stored at lyophilized state at -20°C or lower.

*Please avoid repeated freeze-thaw cycles.*

This product is stable after storage at:

- -20°C to -70°C for 12 months in lyophilized state;
- -70°C for 3 months under sterile conditions after reconstitution.

### SDS-PAGE

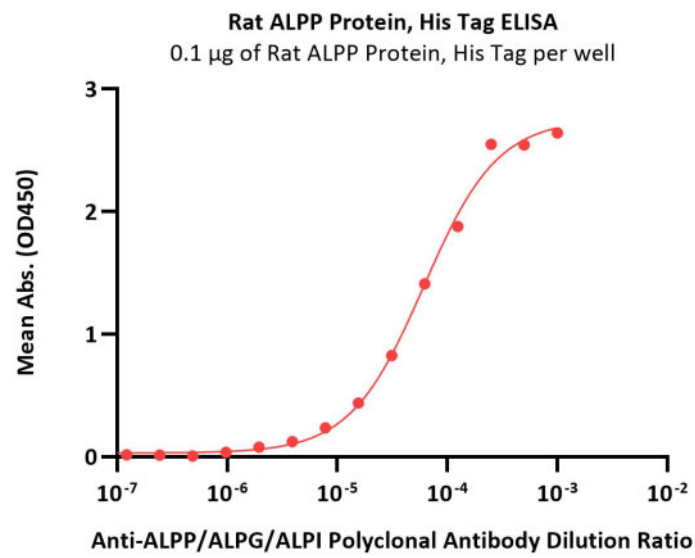


Rat ALPP Protein, His Tag on SDS-PAGE under reducing (R) condition. The gel was stained with Coomassie Blue. The purity of the protein is greater than 90% (With [Star Ribbon Pre-stained Protein Marker](#)).

### Bioactivity-ELISA

Discounts, Gifts,  
and more!





Immobilized Rat ALPP Protein, His Tag (Cat. No. ALP-R52H4) at 1  $\mu$ g/mL (100  $\mu$ L/well) can bind various dilution ratio of Anti-ALPP/ALPG/ALPI Polyclonal Antibody (QC tested).

## Background

ALPP is highly expressed in a variety of solid tumors, including ovarian, endometrial, germ cell, non-small cell lung, bladder and gastric cancers. In normal tissues, it is expressed in the placenta and low in lung and reproductive tissues. ALPP is a membrane protein and exists as a homodimer.

## Clinical and Translational Updates

Discounts, Gifts,  
and more!

