

Monoclonal Anti-C11D5.3 scFv Antibody, Mouse IgG1 (3G8C1) (MALS verified)

Catalog # C13-MY2010b



Source

Monoclonal Anti-C11D5.3 scFv Antibody, Mouse IgG1 (3G8C1) is a Mouse monoclonal antibody recombinantly expressed from HEK293 cells.

Clone

3G8C1

Species

Mouse

Isotype

Mouse IgG1 | Mouse kappa

Antibody Type

Recombinant Monoclonal

Reactivity

Mouse

Immunogen

Recombinant Mouse C11D5.3 scFv derived from HEK293 cells.

Specificity

Specifically recognizes the antigen-recognition domain of C11D5.3 derived CARs.

Application

Application	Recommended Usage
ELISA	0.2-250 ng/mL

Purity

>95% as determined by SDS-PAGE.

>90% as determined by SEC-MALS.

Purification

Protein A purified / Protein G purified

Formulation

Supplied as 0.2 μ m filtered solution in PBS, pH7.4 with trehalose as protectant.

Contact us for customized product form or formulation.

Shipping

This product is supplied and shipped with dry ice, please inquire the shipping cost.

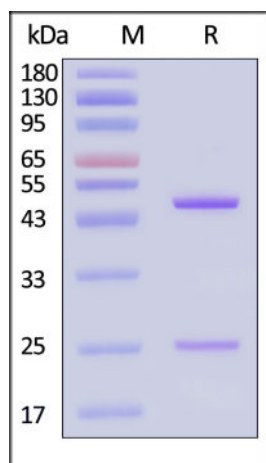
Storage

Please avoid repeated freeze-thaw cycles.

This product is stable after storage at:

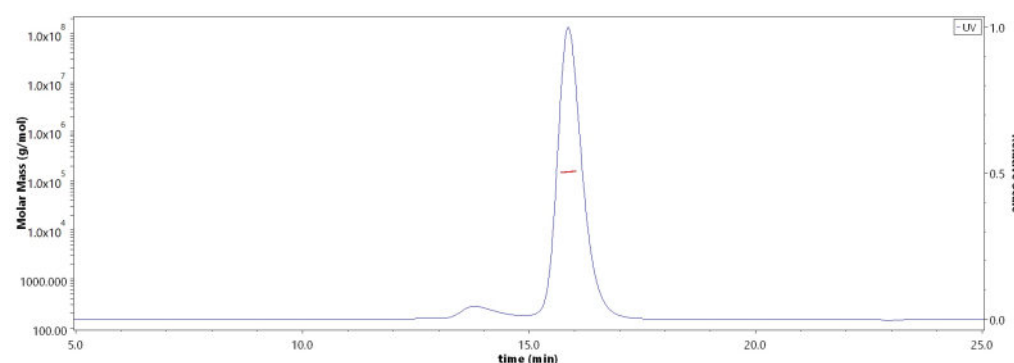
- The product MUST be stored at -70°C or lower upon receipt;
- -70°C for 3 months under sterile conditions.

SDS-PAGE



Monoclonal Anti-C11D5.3 scFv Antibody, Mouse IgG1 (3G8C1) on SDS-PAGE under reducing (R) condition. The gel was stained with Coomassie Blue.

SEC-MALS



The purity of Monoclonal Anti-C11D5.3 scFv Antibody, Mouse IgG1 (3G8C1) (Cat. No. C13-MY2010b) is more than 90% and the molecular weight of this

Discounts, Gifts,
and more!



Monoclonal Anti-C11D5.3 scFv Antibody, Mouse IgG1 (3G8C1) (MALS verified)

Catalog # C13-MY2010b

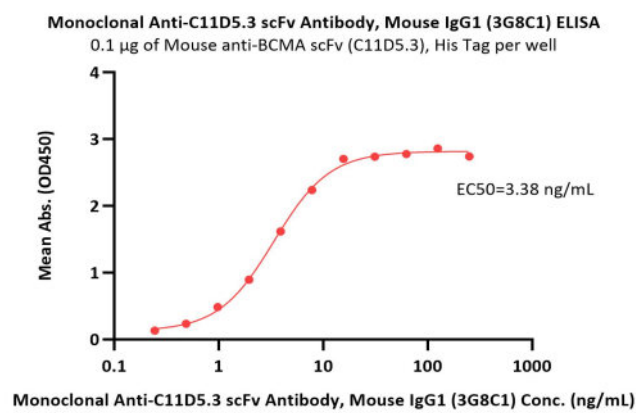


BIOSYSTEMS
Acro

The purity of the protein is greater than 95% (With [Star Ribbon Pre-stained Protein Marker](#)).

protein is around 135-165 kDa verified by SEC-MALS. [Report](#)

Bioactivity-ELISA



Immobilized Mouse anti-BCMA scFv (C11D5.3), His Tag at 1 µg/mL (100 µL/well) can bind Monoclonal Anti-C11D5.3 scFv Antibody, Mouse IgG1 (3G8C1) (Cat. No. C13-MY2010b) with a linear range of 0.2-8 ng/mL (QC tested).

Background

C11D5.3 is an IgG1 mouse monoclonal antibody specific for BCMA, which is a target for the immunotherapy of multiple myeloma and lymphomas. C11D5.3 scFv is the most commonly used ectodomain component of BCMA-specific CARs. So far, multiple reported CART BCMA trials contain the anti-BCMA scFv derived from C11D5.3, such as FDA approved CARs Abecma.

Clinical and Translational Updates

Discounts, Gifts,
and more!



➤ www.acrobiosystems.com

2/28/2025