

# Cynomolgus CDCP1 Protein, His Tag (MALS verified)

Catalog # CD1-C52H3



BIOSYSTEMS  
**Acro**  
Surprise Inside!

## Synonym

CUB domain-containing protein 1, CDCP1, CD318, Membrane glycoprotein gp140, Subtractive immunization M plus HEp3-associated 135 kDa protein, SIMA135, Transmembrane and associated with src kinases, TRASK, UNQ2486, PRO5773

## Source

Cynomolgus CDCP1 Protein, His Tag (CD1-C52H3) is expressed from human 293 cells (HEK293). It contains AA Phe 30 - Thr 667 (Accession # [XP\\_005546930.2](#)).

Predicted N-terminus: Phe 30

## Molecular Characterization

CDCP1(Phe 30 - Thr 667)  
XP\_005546930.2 Poly-his

This protein carries a polyhistidine tag at the C-terminus.

The protein has a calculated MW of 73.9 kDa. The protein migrates as 95-120 kDa when calibrated against [Star Ribbon Pre-stained Protein Marker](#) under reducing (R) condition (SDS-PAGE) due to glycosylation.

## Endotoxin

Less than 1.0 EU per µg by the LAL method.

## Purity

>90% as determined by SDS-PAGE.

## Formulation

Lyophilized from 0.22 µm filtered solution in PBS, pH7.4 with trehalose as protectant.

Contact us for customized product form or formulation.

## Reconstitution

Please see Certificate of Analysis for specific instructions.

*For best performance, we strongly recommend you to follow the reconstitution protocol provided in the CoA.*

## Storage

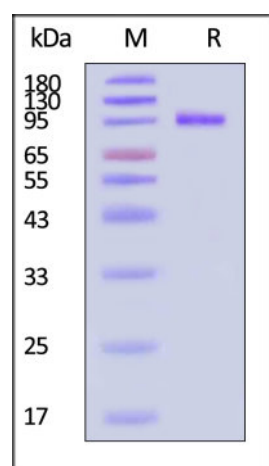
For long term storage, the product should be stored at lyophilized state at -20°C or lower.

*Please avoid repeated freeze-thaw cycles.*

This product is stable after storage at:

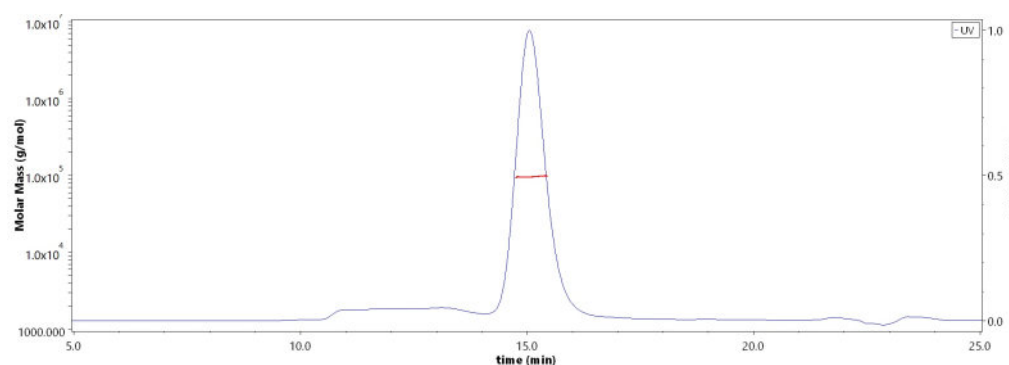
- -20°C to -70°C for 12 months in lyophilized state;
- -70°C for 3 months under sterile conditions after reconstitution.

## SDS-PAGE



Cynomolgus CDCP1 Protein, His Tag on SDS-PAGE under reducing (R) condition. The gel was stained with Coomassie Blue. The purity of the protein is greater than 90% (With [Star Ribbon Pre-stained Protein Marker](#)).

## SEC-MALS



The purity of Cynomolgus CDCP1 Protein, His Tag (Cat. No. CD1-C52H3) is more than 85% and the molecular weight of this protein is around 80-110 kDa verified by SEC-MALS.

[Report](#)

## Background

CUB domain-containing protein 1, also known as CDCP1. CDCP1 is a cell surface glycoprotein that has been recognized both as a tumour marker and as a potential target to disrupt progression of cancer. CDCP1 has been shown to modulate cell-substratum adhesion and motility in colon cancer cell lines.

## Clinical and Translational Updates

Discounts, Gifts,  
and more!



➤ [www.acrobiosystems.com](http://www.acrobiosystems.com)

5/9/2024

**Cynomolgus CDCP1 Protein, His Tag (MALS verified)**

Catalog # CD1-C52H3



**Discounts, Gifts,  
and more!**



**>> [www.acrobiosystems.com](http://www.acrobiosystems.com)**