



Source

Monoclonal Anti-Human CD19 Antibody, Mouse IgG2a (FMC63) is a mouse monoclonal antibody recombinantly expressed from human 293 cells (HEK293), which provides higher batch consistency and long term security of supply.

Application

Flow Cytometry (Detection the expression of CD19 on Human cells).

Clone

FMC63

Species

Mouse

Isotype

Mouse IgG2a | Mouse kappa

Specificity

This product is a specific antibody specifically reacts with CD19 protein.

Reactivity

Human

Immunogen

Human prolymphocytic leukaemia cell line JVM3.

Conjugate

FITC

Excitation source: 488 nm spectral line, argon-ion laser

Excitation Wavelength: 488 nm

Emission Wavelength: 535 nm

Recommended Dilution

1:50

Formulation

Supplied as 0.2 µm filtered solution in PBS, 0.03% Proclin 300, pH7.4 with trehalose as protectant.

Contact us for customized product form or formulation.

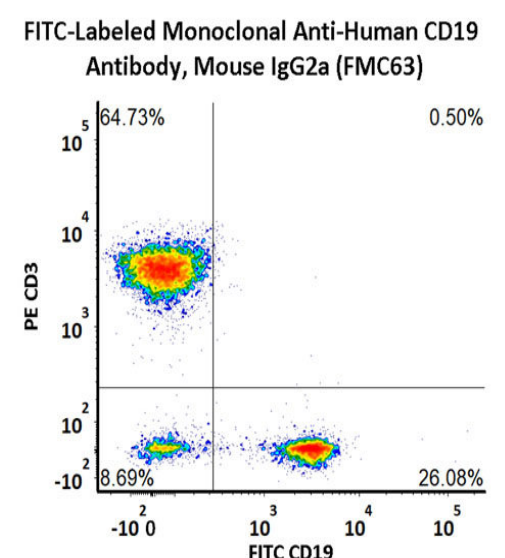
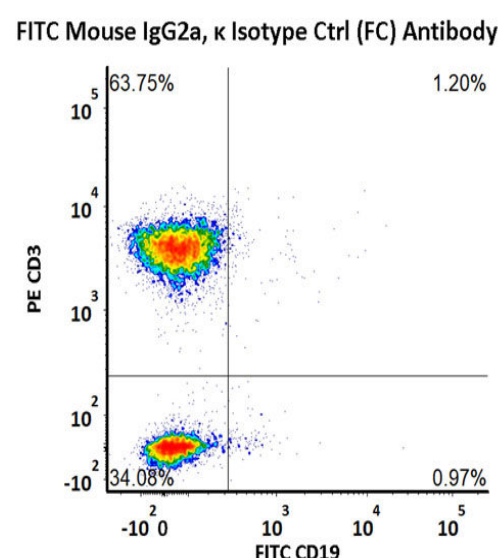
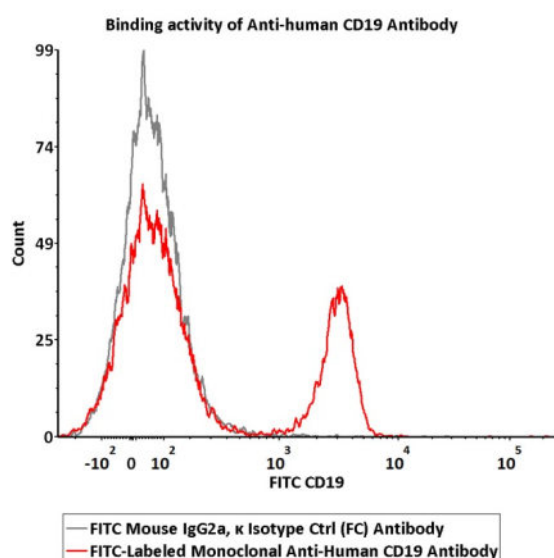
Storage

Please protect from light and avoid repeated freeze-thaw cycles.

This product is stable after storage at:

- The product **MUST** be stored at -70°C or lower upon receipt;
- -70°C for 12 months under sterile conditions.

Bioactivity-FACS



Discounts, Gifts, and more!





Flow cytometric analysis of Human peripheral blood lymphocytes staining with FITC-Labeled Monoclonal Anti-Human CD19 Antibody, Mouse IgG2a (FMC63) (Cat. No. CD9-FM7A1) at 1:50 dilution (2 μ L of the antibody stock solution corresponds to labeling of 1e6 cells in a final volume of 100 μ L), compared with isotype control antibody. FITC signal was used to evaluate the binding activity (QC tested).

Flow cytometric analysis of Human peripheral blood lymphocytes staining with PE anti-human CD3 antibody and FITC-Labeled Monoclonal Anti-Human CD19 Antibody, Mouse IgG2a (FMC63) (Cat. No. CD9-FM7A1) at 1:50 dilution (2 μ L of the antibody stock solution corresponds to labeling of 1e6 cells in a final volume of 100 μ L). FITC signal was used to evaluate the binding activity (QC tested).

Background

FMC63 is an IgG2a mouse monoclonal antibody specific for CD19, which is a target for the immunotherapy of B lineage leukaemias and lymphomas. FMC63 scFv is the most commonly used ectodomain component of CD19-specific CARs. So far, most of reported CART19 trials contain the anti-CD19 scFv derived from FMC63, including the two FDA-approved CARs Kymriah and Yescarta.

Clinical and Translational Updates

Discounts, Gifts,
and more!

