

# HEK293/Human GIPR Stable Cell Line (Low Expression) Data Sheet

## ➤ *Limited Use & License Disclosure*

### **BY USE OF THIS PRODUCT, RESEARCHER AGREES TO BE BOUND BY THE FOLLOWING TERMS OF LIMITED USE OF THIS CELL LINE PRODUCT.**

- If the researcher is not willing to accept the terms of limited use of this cell line product, and the product is unused, ACRO will accept return of the unused product.
- Researchers may use this product for research use only, no commercial use is allowed.  
"Commercial use" means any and all uses of this product and derivatives by a party for profit or other consideration and may include but is not limited to use in: (1) product manufacture; and (2) to provide a service, information or data; and/or resale of the product or its derivatives, whether or not such product or derivatives are resold for use in research.
- This cell line is neither intended for any animal or human therapeutic purposes nor for any direct human in vivo use. You have no right to share, modify, transfer, distribute, sell, sublicense, or otherwise make the cell line available for use to other researchers, laboratories, research institutions, hospitals, universities, or service organizations.
- ACROBIOSYSTEMS MAKES NO WARRANTIES OR REPRESENTATIONS OF ANY KIND, EITHER EXPRESSED OR IMPLIED, WITH RESPECT TO THE SUITABILITY OF THE CELL LINE FOR ANY PARTICULAR USE.
- ACROBIOSYSTEMS ACCEPTS NO LIABILITY IN CONNECTION WITH THE HANDLING OR USE OF THE CELL LINE.
- Modifications of the cell line, transfer to a third party, or commercial use of the cell line may require a separate license and additional fees. Please contact [order.cn@acrobiosystems.com](mailto:order.cn@acrobiosystems.com) for further details.

# HEK293/Human GIPR Stable Cell Line (Low Expression) Data Sheet

## HEK293/Human GIPR Stable Cell Line (Low Expression)

Catalog No.	Size
CHEK-ATP208	2 × (1 vial contains ~5×10 <sup>6</sup> cells)

### • *Description*

The HEK293/Human GIPR Stable Cell Line was engineered to express the receptor full length human GIPR (Gene ID: 2696), with different levels of GIPR expression (High, Medium, Low). Surface expression of human GIPR was confirmed by flow cytometry.

### • *Application*

- Useful for cell-based GIPR binding assay
- Screen for human GIPR agonists based on cAMP accumulation assay

### • *Cell Line Profile*

Cell line	HEK293/Human GIPR Stable Cell Line (Low Expression)
Host Cell	HEK293
Property	Adherent
Complete Growth Medium	DMEM + 10% FBS
Selection Marker	Hygromycin B (20 µg/mL)
Incubation	37°C with 5% CO <sub>2</sub>
Doubling Time	22-24 hours
Transduction Technique	Lentivirus

## HEK293/Human GIPR Stable Cell Line (Low Expression) Data Sheet

### • *Materials Required for Cell Culture*

- DMEM Medium (BasalMedia, Cat. No. L120KJ)

**Note:** If you are unable to obtain the specified DMEM medium (BasalMedia, Cat. No. L120KJ) in China, you may use an alternative DMEM medium (Gibco, Cat. No. 11965-092) or another suitable medium for culturing.

- Fetal bovine serum (CellMax, Cat. No. SA211.02)
- Hygromycin B (Invitrogen, Cat. No. 10687010)
- 0.25% Trypsin-EDTA (1X), Phenol Red (Gibco, Cat. No. 25200-056)
- Penicillin-Streptomycin (Gibco, Cat. No. 15140-122)
- Phosphate Buffered Saline (1X) (HyClone, Cat. No. SH30256.01)
- Complete Growth Medium: DMEM + 10% FBS, 1%P/S
- Culture Medium: DMEM + 10% FBS, Hygromycin B (20 µg/mL), 1%P/S
- Freeze Medium: 90% FBS, 10% (V/V) DMSO
- T-75 Culture flask (Corning, Cat. No. 430641)
- Cryogenic storage vials (SARSTEDT, Cat. No. 72.379.007)
- Thermostat water bath
- Centrifuge (Cence, Model: L550)
- Cell counter (MONWEI, Model: SmartCell200A Plus)
- CO<sub>2</sub> Incubator (Thermo, Model: 3111)
- Biological Safety Cabinet (Thermo, Model: 1389)

## HEK293/Human GIPR Stable Cell Line (Low Expression) Data Sheet

### • *Recovery*

1. Thaw the vial by gentle agitation in a 37°C water bath. To reduce the possibility of contamination, keep the cap out of the water. Thawing should be rapid (approximately 2 minutes).
2. Remove the vial from the water bath as soon as the contents are thawed, and decontaminate by spraying with 70% ethanol. All the operations from this point on should be carried out under strict aseptic conditions.
3. Transfer the vial contents to a centrifuge tube containing 4.0 mL complete growth medium and spin at approximately 1000 rpm for 5 minutes.
4. Resuspend cell pellet with 5 mL **complete growth medium** and transfer the cell suspension into T-75 flask containing 10-15 mL of pre-warmed complete growth medium.
5. Incubate at 37°C with 5% CO<sub>2</sub> incubator until the cells are ready to be split.

### • *Subculture*

1. Remove and discard culture medium.
2. Wash the cells once with sterile PBS.
3. Add 2 mL of 0.25% trypsin to cell culture flask. Place the flask at 37°C for 2-3 minutes, until 90% of the cells have detached.
4. Add 6.0 to 8.0 mL of **culture medium** and aspirate cells by gently pipetting.
5. Add appropriate aliquots of the cell suspension to new culture vessel.
6. Incubate at 37°C with 5% CO<sub>2</sub> incubator.

**Subcultivation Ratio:** A subcultivation ratio of 1:6 to 1:10 is recommended.

**Medium Renewal:** Every 2 to 3 days.

**Note:** After recovery for 1-2 generations with the complete growth medium not containing the selection marker, if the cell state is well, changing to the culture medium containing the selection marker.

# HEK293/Human GIPR Stable Cell Line (Low Expression) Data Sheet

## • *Cryopreservation*

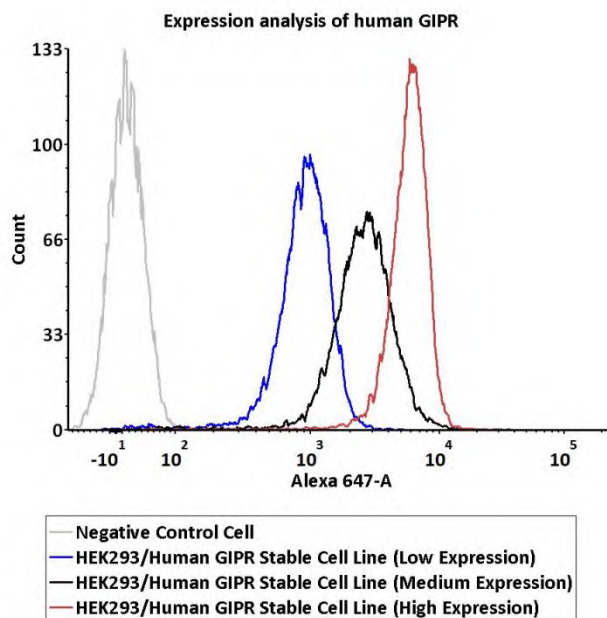
1. Remove and discard spent medium.
2. Detach cells from the cell culture flasks with 0.25% trypsin.
3. Centrifuge at 1000 rpm for 5 min at RT to pellet cells.
4. Resuspend the cell pellets with complete growth medium and count viable cells.
5. Centrifuge at 1000 rpm for 5 min at RT and resuspend cells in freezing medium to a concentration of  $5 \times 10^6$  to  $1 \times 10^7$  cells/mL.
6. Aliquot into cryogenic storage vials. Place vials in a programmable cooler or an insulated box placed in a  $-80^\circ\text{C}$  freezer overnight, then transferring to liquid nitrogen storage.

## • *Storage*

- **Product format:** Frozen
- **Storage conditions:** Liquid nitrogen immediately upon receipt

# HEK293/Human GIPR Stable Cell Line (Low Expression) Data Sheet

• *Receptor Assay*



Catalog No.	Stable Cell Line	MFI for GIPR (Alexa Fluor® 647)
<b>CHEK-ATP208</b>	<b>HEK293/Human GIPR Stable Cell Line (Low Expression)</b>	<b>897.15</b>
CHEK-ATP207	HEK293/Human GIPR Stable Cell Line (Medium Expression)	2495.80
CHEK-ATP206	HEK293/Human GIPR Stable Cell Line (High Expression)	5716.90

**Fig1. Expression analysis of human GIPR on HEK293/Human GIPR Stable Cell Line by FACS.** Cell surface staining using Alexa Fluor® 647-labeled anti-human GIPR antibody was performed on HEK293/Human GIPR Stable Cell Line with different expression levels: HEK293/Human GIPR Stable Cell Line (Low Expression); HEK293/Human GIPR Stable Cell Line (Medium Expression); HEK293/Human GIPR Stable Cell Line (High Expression).

# HEK293/Human GIPR Stable Cell Line (Low Expression) Data Sheet

## Products

HEK293/Human GIPR Stable Cell Line (High Expression)  
 HEK293/Human GIPR Stable Cell Line (Medium Expression)  
 HEK293/Human GLP-1R Stable Cell Line (High Expression)  
 HEK293/Human GLP-1R Stable Cell Line (Medium Expression)  
 HEK293/Human GLP-1R Stable Cell Line (Low Expression)  
 HEK293/Human ASGR1 Stable Cell Line  
 Human GLP-1R (Luc) HEK293 Reporter Cell  
 Human GCGR (Luc) HEK293 Reporter Cell  
 Human GIPR (Luc) HEK293 Reporter Cell  
 Human FGF-21 (Luc) HEK293 Reporter Cell  
 Human Activin RII (Luc) HEK293 Reporter Cell  
 HEK293/Human ASGR1&ASGR2 Stable Cell Line  
 HEK293/Human GPR75 Stable Cell Line  
 Human THRB (Luc) HEK293 Reporter Cell  
 Human THRA (Luc) HEK293 Reporter Cell  
 HEK293/Human GLP-1R&GIPR Stable Cell Line

## Cat.No.

CHEK-ATP206  
 CHEK-ATP207  
 CHEK-ATP160  
 CHEK-ATP161  
 CHEK-ATP162  
 CHEK-ATP080  
 CHEK-ATF096  
 CHEK-ATF103  
 CHEK-ATF104  
 CHEK-ATF163  
 CHEK-ATF164  
 CHEK-ATP172  
 CHEK-ATP174  
 CHEK-ATF181  
 CHEK-ATF180  
 CHEK-ATP205