

Mouse Clec2e Protein, Fc Tag (MALS verified)

Catalog # CLE-M5253



BIOSYSTEMS
Acro

Source

Mouse Clec2e Protein, Fc Tag(CLE-M5253) is expressed from human 293 cells (HEK293). It contains AA Val 60 - Gly 204 (Accession # [Q80XD9-1](#)).

Predicted N-terminus: Val 60

Molecular Characterization

Clec2e(Val 60 - Gly 204) Q80XD9-1	Fc(Pro 100 - Lys 330) P01857
--------------------------------------	---------------------------------

This protein carries a human IgG1 Fc tag at the C-terminus.

The protein has a calculated MW of 43.0 kDa. The protein migrates as 53-63 kDa when calibrated against [Star Ribbon Pre-stained Protein Marker](#) under reducing (R) condition (SDS-PAGE) due to glycosylation.

Endotoxin

Less than 1.0 EU per µg by the LAL method.

Purity

>95% as determined by SDS-PAGE.

Formulation

Lyophilized from 0.22 µm filtered solution in PBS, pH7.4 with trehalose as protectant.

Contact us for customized product form or formulation.

Reconstitution

Please see Certificate of Analysis for specific instructions.

For best performance, we strongly recommend you to follow the reconstitution protocol provided in the CoA.

Storage

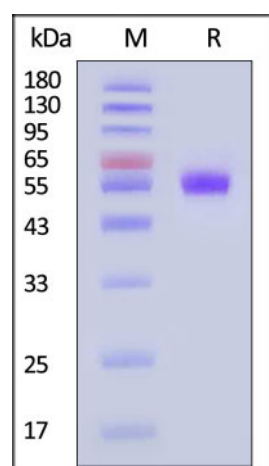
For long term storage, the product should be stored at lyophilized state at -20°C or lower.

Please avoid repeated freeze-thaw cycles.

This product is stable after storage at:

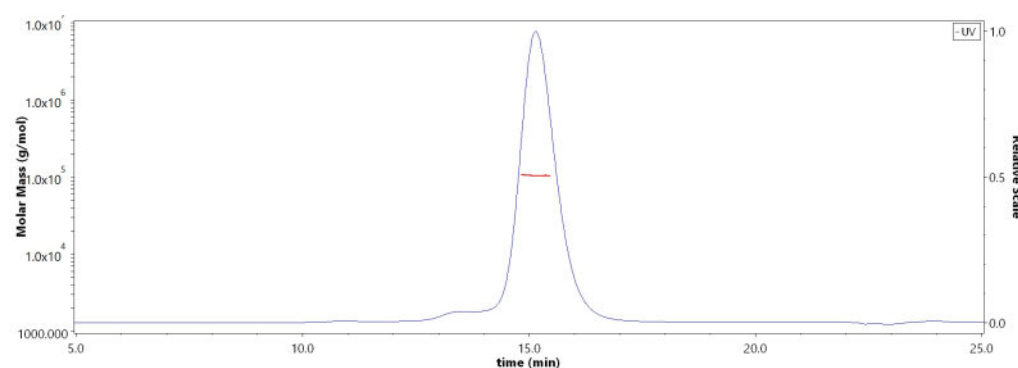
- -20°C to -70°C for 12 months in lyophilized state;
- -70°C for 3 months under sterile conditions after reconstitution.

SDS-PAGE



Mouse Clec2e Protein, Fc Tag on SDS-PAGE under reducing (R) condition. The gel was stained with Coomassie Blue. The purity of the protein is greater than 95% (With [Star Ribbon Pre-stained Protein Marker](#)).

SEC-MALS



The purity of Mouse Clec2e Protein, Fc Tag (Cat. No. CLE-M5253) is more than 85% and the molecular weight of this protein is around 90-110 kDa verified by SEC-MALS.

[Report](#)

Background

CLEC2e (C-type lectin domain family 2 member e) is also known as Clra, clr-a. Clec2e is a receptor for lectin-type cell surface.

Clinical and Translational Updates

Discounts, Gifts,
and more!



Mouse Clec2e Protein, Fc Tag (MALS verified)

Catalog # CLE-M5253



Please contact us via TechSupport@acrobiosystems.com if you have any question on this product.

Discounts, Gifts,
and more!



➤ www.acrobiosystems.com