



## Synonym

C-X-C motif chemokine 10, 10 kDa interferon gamma-induced protein, Gamma-IP10, IP-10, Small-inducible cytokine B10, CXCL10(1-73), CXCL10, INP10, SCYB10

## Source

Human CXCL10 Protein, Tag Free (CX0-H5113) is expressed from E. coli cells. It contains AA Val 22 - Pro 98 (Accession # [P02778-1](#)).  
Predicted N-terminus: Met

## Molecular Characterization

**CXCL10(Val 22 - Pro 98)**  
**P02778-1**

This protein carries no "tag".

The protein has a calculated MW of 8.8 kDa. The protein migrates as 9 kDa when calibrated against [Star Ribbon Pre-stained Protein Marker](#) under reducing (R) condition (SDS-PAGE).

## Endotoxin

Less than 1.0 EU per µg by the LAL method.

## Purity

>90% as determined by SDS-PAGE.

## Formulation

Lyophilized from 0.22 µm filtered solution in 50 mM Tris, 150 mM NaCl, pH7.5 with trehalose as protectant.

Contact us for customized product form or formulation.

## Reconstitution

Please see Certificate of Analysis for specific instructions.

*For best performance, we strongly recommend you to follow the reconstitution protocol provided in the CoA.*

## Storage

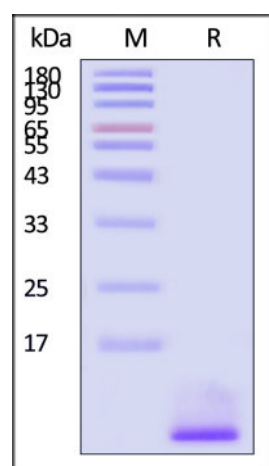
For long term storage, the product should be stored at lyophilized state at -20°C or lower.

*Please avoid repeated freeze-thaw cycles.*

This product is stable after storage at:

- -20°C to -70°C for 12 months in lyophilized state;
- -70°C for 3 months under sterile conditions after reconstitution.

## SDS-PAGE

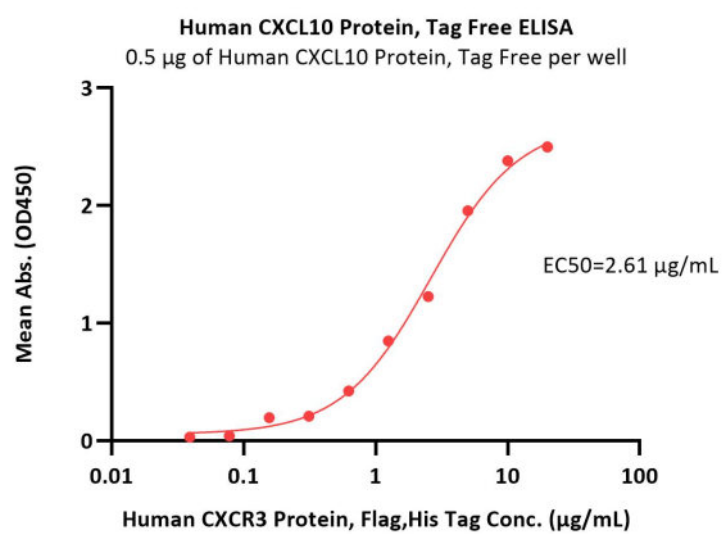


Human CXCL10 Protein, Tag Free on SDS-PAGE under reducing (R) condition. The gel was stained with Coomassie Blue. The purity of the protein is greater than 90% (With [Star Ribbon Pre-stained Protein Marker](#)).

## Bioactivity-ELISA

Discounts, Gifts,  
and more!





Immobilized Human CXCL10 Protein, Tag Free (Cat. No. CX0-H5113) at 5 µg/mL (100 µL/well) can bind Human CXCR3 Protein, Flag, His Tag (Cat. No. CX3-H52D5) with a linear range of 0.039-10 µg/mL (QC tested).

## Background

C-X-C Motif Chemokine Ligand 10 (CXCL10) is a pro-inflammatory chemokine secreted by a wide spectrum of cells. It is involved in multiple mechanisms and reported to have pleiotropic effects, including immune cell migration and attraction to inflammation sites, angiogenesis, and cancer cell growth. CXCL10 is produced by pancreatic islet cells upon inflammatory stress and is specifically recognized by C-X-C Motif Chemokine Receptor 3 (CXCR3) which is expressed by activated T-lymphocytes and other immune cells.

## Clinical and Translational Updates

Discounts, Gifts,  
and more!

