



**Source**

Monoclonal Anti-Japanese encephalitis virus Envelope protein E Antibody, Human IgG1 (1F8) is a chimeric monoclonal antibody recombinantly expressed from HEK293, which combines the variable region of a mouse monoclonal antibody with Human constant domain.

**Clone**

1F8

**Species**

Mouse

**Isotype**

Human IgG1 | Human Kappa

**Conjugate**

Unconjugated

**Antibody Type**

Recombinant Monoclonal

**Reactivity**

Virus

**Immunogen**

Recombinant Japanese encephalitis virus (strain SA-14) Envelope protein E is expressed from human 293 cells.

**Specificity**

Specifically recognizes Japanese encephalitis virus (strain SA-14) Envelope protein E.

**Application**

Application	Recommended Usage
ELISA	0.1-6 ng/mL

**Purity**

>95% as determined by SDS-PAGE.

>90% as determined by SEC-MALS.

**Purification**

Protein A purified/ Protein G purified

**Formulation**

Lyophilized from 0.22 µm filtered solution in PBS, pH7.4 with trehalose as protectant.

Contact us for customized product form or formulation.

**Reconstitution**

Please see Certificate of Analysis for specific instructions.

*For best performance, we strongly recommend you to follow the reconstitution protocol provided in the CoA.*

**Storage**

For long term storage, the product should be stored at lyophilized state at -20°C or lower.

*Please avoid repeated freeze-thaw cycles.*

This product is stable after storage at:

- -20°C to -70°C for 12 months in lyophilized state;
- -70°C for 3 months under sterile conditions after reconstitution.

**SDS-PAGE**

**SEC-MALS**

Discounts, Gifts,  
and more!

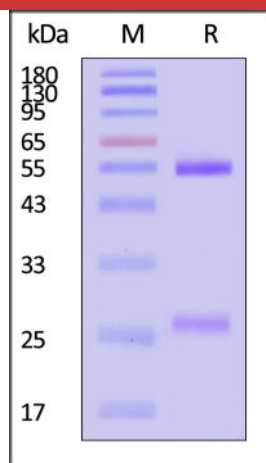


# Monoclonal Anti-Japanese encephalitis virus Envelope protein E Antibody, Human IgG1 (1F8) (MALS verified)

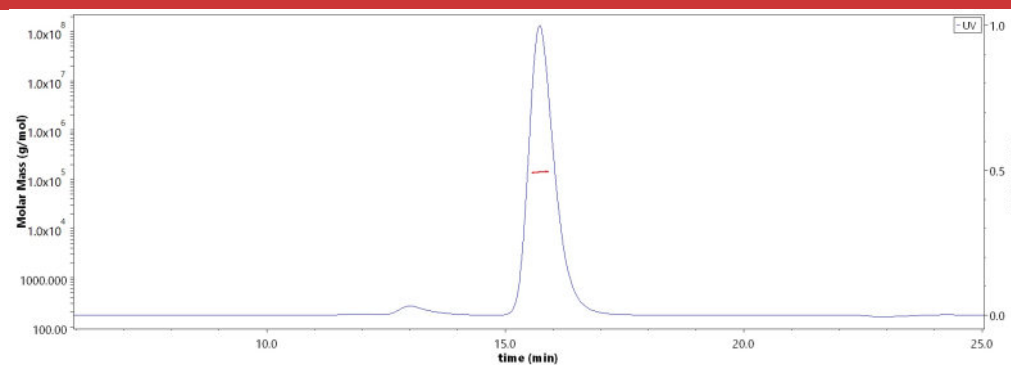
Catalog # ENE-MY2023



BIOSYSTEMS  
**Acro**  
Surprise Inside!



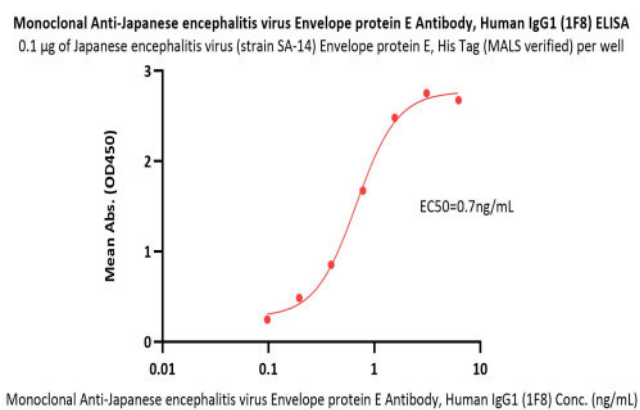
Monoclonal Anti-Japanese encephalitis virus Envelope protein E Antibody, Human IgG1 (1F8) on SDS-PAGE under reducing (R) condition. The gel was stained with Coomassie Blue. The purity of the protein is greater than 95% (With [Star Ribbon Pre-stained Protein Marker](#)).



The purity of Monoclonal Anti-Japanese encephalitis virus Envelope protein E Antibody, Human IgG1 (1F8) (Cat. No. ENE-MY2023) is more than 90% and the molecular weight of this protein is around 135-160 kDa verified by SEC-MALS.

[Report](#)

## Bioactivity-ELISA



Immobilized Japanese encephalitis virus (strain SA-14) Envelope protein E, His Tag (MALS verified) (Cat. No. ENE-J52H5) at 1  $\mu$ g/mL (100  $\mu$ L/well) can bind Monoclonal Anti-Japanese encephalitis virus Envelope protein E Antibody, Human IgG1 (1F8) (Cat. No. ENE-MY2023) with a linear range of 0.1-1.6 ng/mL (QC tested).

## Background

Japanese encephalitis B, a mosquito-borne flavivirus, or B encephalitis, is the most important cause of viral encephalitis in Asia in terms of frequency and severity. JEV envelope protein E is an important research target, binding to host cell surface receptors and mediating fusion between the virus and the cell membrane.

## Clinical and Translational Updates

Discounts, Gifts,  
and more!



[www.acrobiosystems.com](http://www.acrobiosystems.com)

10/12/2024