



Application

Flow Cytometry (Evaluation of the expression of CD25 on Human cells).

Clone

S561

Species

Mouse

Isotype

Mouse IgG1 | Mouse Kappa

Specificity

This product is a specific antibody specifically reacts with CD25 protein

Reactivity

Human

Immunogen

Purified Human CD25 Protein.

Conjugate

PE

Excitation Wavelength: 488 nm / 561 nm

Emission Wavelength: 575 nm

Isotype Control

The Isotype control is sold separately and you can search for Cat. No. [DNP-PMI](#) for product information.

Recommended Dilution

1:20

Formulation

Supplied as 0.2 µm filtered solution in PBS, pH7.4, 0.2% BSA, 0.03% Proclin300 with trehalose as protectant.

Contact us for customized product form or formulation.

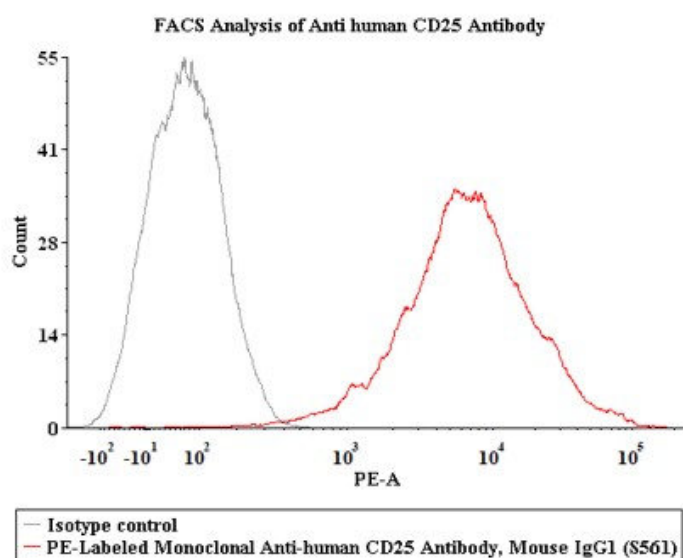
Storage

Please protect from light and avoid repeated freeze-thaw cycles.

This product is stable after storage at:

- Store at 2-8 °C for 12 months.

Bioactivity-FACS



Flow cytometric analysis of Activated Human PBMC cells staining with PE-Labeled Monoclonal Anti-human CD25 Antibody, Mouse IgG1 (S561)(Cat. No. FABm012-01) at 1:20 dilution (5 µL of the antibody stock solution corresponds to labeling of 1e6 cells in a final volume of 100 µL), compared

Discounts, Gifts,
and more!



PE-Labeled Monoclonal Anti-Human CD25 Antibody, Mouse IgG1 (S561) (0.03% Proclin)

Catalog # FABm012-01



BIOSYSTEMS
Acro

with isotype control antibody. PE signal was used to evaluate the binding activity (QC tested).

Background

IL-2 R alpha, also known as CD25, is a type I transmembrane protein that associates with IL-2 R beta and the common gamma chain to form a high affinity heterotrimeric receptor complex for IL-2. A soluble form of IL-2 R alpha has been detected in serum.

Clinical and Translational Updates

Discounts, Gifts,
and more!



➤ www.acrobiosystems.com

2/26/2025