



Source

Human HLA-DQA1*03:02&DQB1*03:03 Monomer Protein(HL3-H5285) is expressed from human 293 cells (HEK293). It contains AA Glu 24 - Glu 217 (HLA-DQA1*03:02) & Arg 33 - Lys 230 (HLA-DQB1*03:03) (Accession # [AAU88001.1](#) (HLA-DQA1*03:02) & [AAA59755.1](#) (HLA-DQB1*03:03)).

Molecular Characterization

Human HLA-DQA1*03:02&DQB1*03:03 Monomer Protein, produced by co-expression of HLA-DQA1*03:02 and HLA-DQB1*03:03, has a calculated MW of 27.7 kDa (HLA-DQA1*03:02) and 30.2 kDa (HLA-DQB1*03:03). Subunit HLA-DQA1*03:02 is fused with a polyhistidine tag at the C-terminus and subunit HLA-DQB1*03:03 is fused with a twin strep tag at the C-terminus. The reducing (R) protein migrates as 33-42 kDa due to glycosylation.

Endotoxin

Less than 1.0 EU per µg by the LAL method.

Purity

>90% as determined by SDS-PAGE.

Formulation

Lyophilized from 0.22 µm filtered solution in PBS, pH7.4 with trehalose as protectant.

Contact us for customized product form or formulation.

Reconstitution

Please see Certificate of Analysis for specific instructions.

For best performance, we strongly recommend you to follow the reconstitution protocol provided in the CoA.

Storage

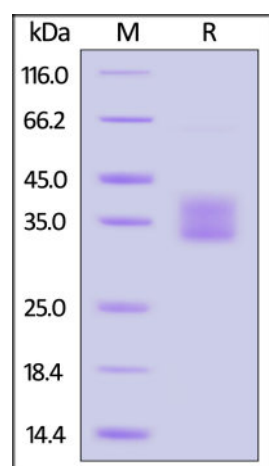
For long term storage, the product should be stored at lyophilized state at -20°C or lower.

Please avoid repeated freeze-thaw cycles.

This product is stable after storage at:

- -20°C to -70°C for 12 months in lyophilized state;
- -70°C for 3 months under sterile conditions after reconstitution.

SDS-PAGE



Human HLA-DQA1*03:02&DQB1*03:03 Monomer Protein on SDS-PAGE under reducing (R) condition. The gel was stained with Coomassie Blue. The purity of the protein is greater than 90%.

Clinical and Translational Updates

Discounts, Gifts,
and more!

