



### Source

Biotinylated Human HLA-A\*02:01&B2M&HIV Gag (SLYNTVATL) Complex Protein(HLH-H82E8) is expressed from human 293 cells (HEK293). It contains AA Gly 25 - Ile 308 (HLA-A\*02:01) & Ile 21 - Met 119 (B2M) & SLYNTVATL peptide (Accession # [AAA59606.1](#) (HLA-A\*02:01) & [P61769](#) (B2M) & SLYNTVATL).

Predicted N-terminus: Gly 25 & Ser

### Molecular Characterization

Biotinylated Human HLA-A\*02:01&B2M&HIV Gag (SLYNTVATL) Complex Protein is produced by co-expression of HLA and B2M loaded with HIV Gag peptide.

This protein carries a polyhistidine tag at the C-terminus, followed by an Avi tag (Avitag™).

The protein has a calculated MW of 36.3 kDa and 13.7 kDa. The protein migrates as 40-43 kDa and 14 kDa under reducing (R) condition (SDS-PAGE) due to glycosylation.

### Labeling

*Biotinylation of this product is performed using Avitag™ technology. Briefly, the single lysine residue in the Avitag is enzymatically labeled with biotin.*

### Protein Ratio

Passed as determined by the HABA assay / binding ELISA.

### Endotoxin

Less than 1.0 EU per µg by the LAL method.

### Purity

>95% as determined by SDS-PAGE.

>95% as determined by SEC-MALS.

### Formulation

Lyophilized from 0.22 µm filtered solution in PBS, pH7.4 with trehalose as protectant.

Contact us for customized product form or formulation.

### Reconstitution

Please see Certificate of Analysis for specific instructions.

*For best performance, we strongly recommend you to follow the reconstitution protocol provided in the CoA.*

### Storage

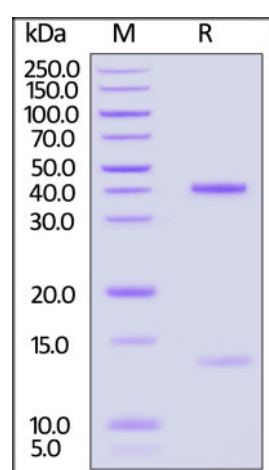
For long term storage, the product should be stored at lyophilized state at -20°C or lower.

*Please avoid repeated freeze-thaw cycles.*

This product is stable after storage at:

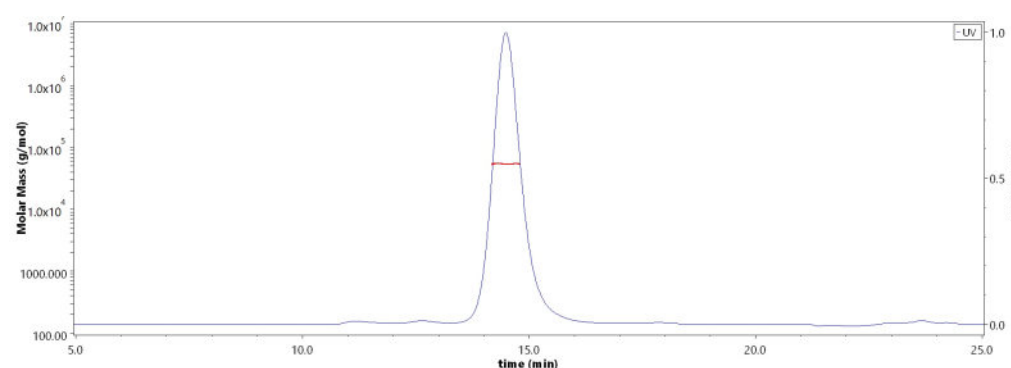
- -20°C to -70°C for 12 months in lyophilized state;
- -70°C for 3 months under sterile conditions after reconstitution.

### SDS-PAGE



Biotinylated Human HLA-A\*02:01&B2M&HIV Gag (SLYNTVATL) Complex Protein on SDS-PAGE under reducing (R) condition. The gel was stained with Coomassie Blue. The purity of the protein is greater than 95%.

### SEC-MALS



The purity of Biotinylated Human HLA-A\*02:01&B2M&HIV Gag (SLYNTVATL) Complex Protein (Cat. No. HLH-H82E8) is more than 95% and the molecular weight of this protein is around 48-58 kDa verified by SEC-MALS.

[Report](#)

### Bioactivity-ELISA

Discounts, Gifts,  
and more!

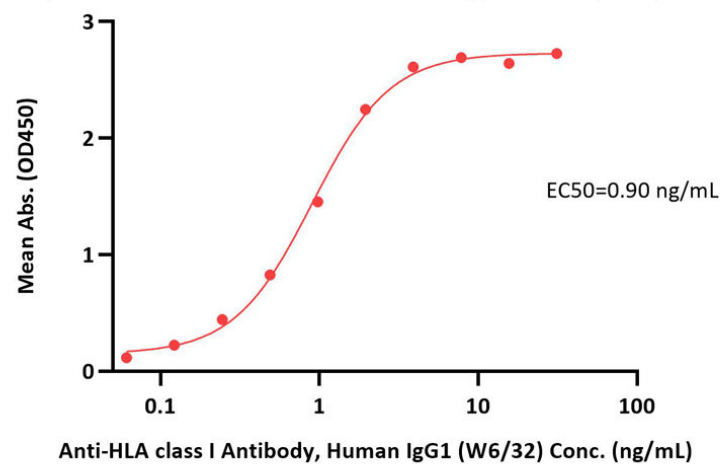


# Biotinylated Human HLA-A\*02:01&B2M&HIV Gag (SLYNTVATL) Complex Protein (Monomer, MALS verified)

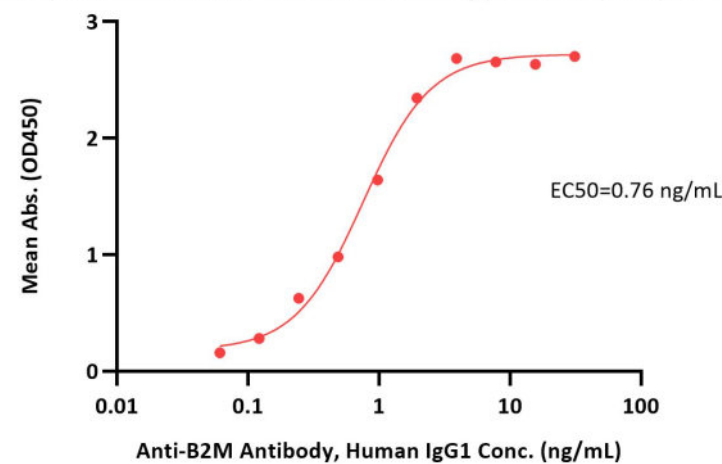


Catalog # HLH-H82E8

**Biotinylated Human HLA-A\*02:01&B2M&HIV Gag (SLYNTVATL) Complex Protein ELISA**  
0.1 µg of Biotinylated Human HLA-A\*02:01&B2M&HIV Gag (SLYNTVATL) Complex Protein per well



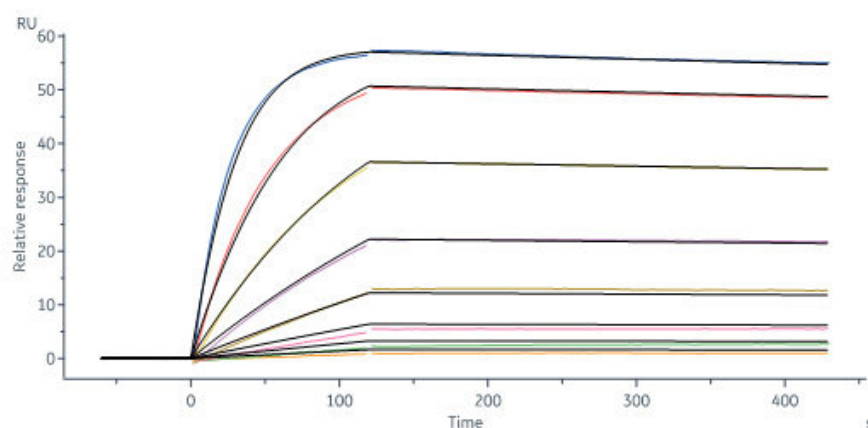
**Biotinylated Human HLA-A\*02:01&B2M&HIV Gag (SLYNTVATL) Complex Protein ELISA**  
0.1 µg of Biotinylated Human HLA-A\*02:01&B2M&HIV Gag (SLYNTVATL) Complex Protein per well



Immobilized Biotinylated Human HLA-A\*02:01&B2M&HIV Gag (SLYNTVATL) Complex Protein (Cat. No. HLH-H82E8) at 1 µg/mL (100 µL/well) on streptavidin (Cat. No. STN-N5116) precoated (0.5 µg/well) plate can bind Anti-HLA class I Antibody, Human IgG1 (W6/32) with a linear range of 0.1-2 ng/mL (QC tested).

Immobilized Biotinylated Human HLA-A\*02:01&B2M&HIV Gag (SLYNTVATL) Complex Protein (Cat. No. HLH-H82E8) at 1 µg/mL (100 µL/well) on streptavidin (Cat. No. STN-N5116) precoated (0.5 µg/well) plate can bind Anti-B2M Antibody, Human IgG1 with a linear range of 0.1-2 ng/mL (Routinely tested).

## Bioactivity-SPR



HIV Gag TCR captured on Protein A Chip can bind Biotinylated Human HLA-A\*02:01&B2M&HIV Gag (SLYNTVATL) Complex Protein (Cat. No. HLH-H82E8) with an affinity constant of 0.345 nM as determined in SPR assay (Biacore 8K) (Routinely tested).

## Background

HIV (human immunodeficiency virus) is a virus that attacks the body's immune system. If HIV is not treated, it can lead to AIDS (acquired immunodeficiency syndrome). It can be transmitted via the exchange of a variety of body fluids from infected people, such as blood, breast milk, semen and vaginal secretions, And from a mother to her child during pregnancy and delivery. This disease can be managed by treatment regimens composed of a combination of antiretroviral (ARV) drugs. The Human HLA-A\*0201 HIV (SLYNTVATL) complex protein is a complex of HLA-A\*0201 of the MHC Class I, B2M, and SLYNTVATL peptide of the HIV.

## Clinical and Translational Updates

Please contact us via [TechSupport@acrobiosystems.com](mailto:TechSupport@acrobiosystems.com) if you have any question on this product.

Discounts, Gifts,  
and more!



[www.acrobiosystems.com](http://www.acrobiosystems.com)

11/15/2023