



Synonym

HLA-A*0201 | B2M

Source

Unconjugated Human HLA-A*02:01&B2M Monomer Protein(HLM-H52H5) is expressed from human 293 cells (HEK293). It contains AA Gly 25 - Ile 308 (HLA-A*02:01) & Ile 21 - Met 119 (B2M) (Accession # [AAA59606.1](#) (HLA-A*02:01) & [P61769-1](#) (B2M)).

Predicted N-terminus: Gly 25 & Ile 21

Molecular Characterization

This protein carries a polyhistidine tag at the C-terminus, followed by an Avi tag (Avitag™), and it is not biotinylated. The protein has a calculated MW of 36.3 kDa and 11.7 kDa. The protein migrates as 38-42 kDa and 10-11 kDa when calibrated against [Star Ribbon Pre-stained Protein Marker](#) under reducing (R) condition (SDS-PAGE) due to glycosylation.

Endotoxin

Less than 1.0 EU per µg by the LAL method.

Purity

>90% as determined by SDS-PAGE.

Formulation

Lyophilized from 0.22 µm filtered solution in PBS, pH7.4 with trehalose as protectant.

Contact us for customized product form or formulation.

Reconstitution

Please see Certificate of Analysis for specific instructions.

For best performance, we strongly recommend you to follow the reconstitution protocol provided in the CoA.

Storage

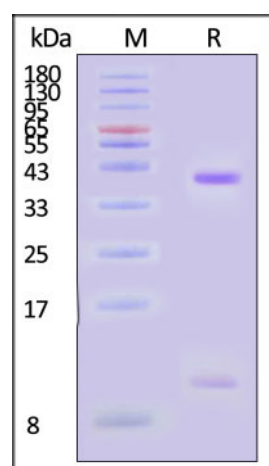
For long term storage, the product should be stored at lyophilized state at -20°C or lower.

Please avoid repeated freeze-thaw cycles.

This product is stable after storage at:

- -20°C to -70°C for 12 months in lyophilized state;
- -70°C for 3 months under sterile conditions after reconstitution.

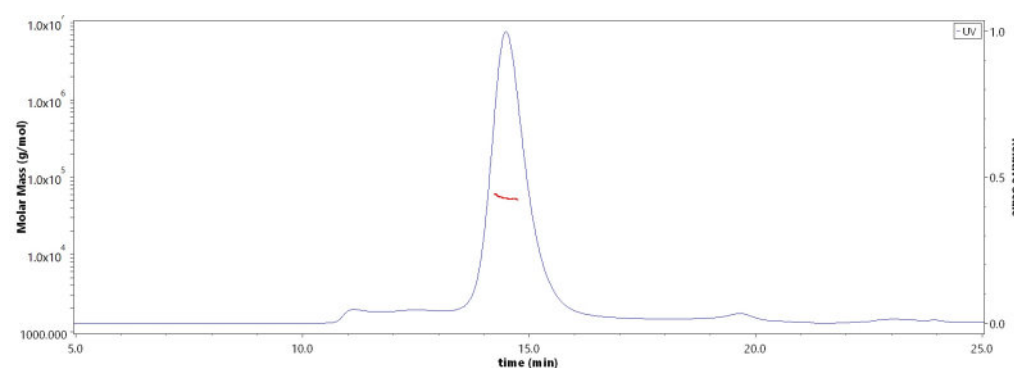
SDS-PAGE



Unconjugated Human HLA-A*02:01&B2M Monomer Protein on SDS-PAGE under reducing (R) condition. The gel was stained with Coomassie Blue. The purity of the protein is greater than 90% (With [Star Ribbon Pre-stained Protein Marker](#)).

Bioactivity-ELISA

SEC-MALS



The purity of Unconjugated Human HLA-A*02:01&B2M Monomer Protein (Cat. No. HLM-H52H5) is more than 85% and the molecular weight of this protein is around 48-60 kDa verified by SEC-MALS.

[Report](#)

Discounts, Gifts,
and more!



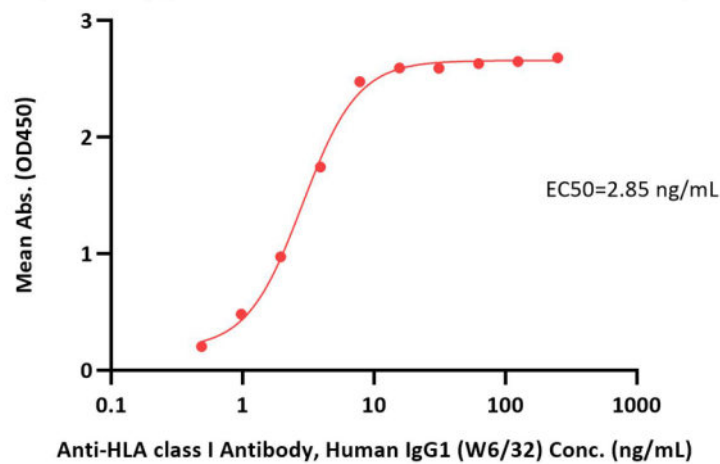
Unconjugated Human HLA-A*02:01&B2M Monomer Protein (Peptide free, MALS verified)

Catalog # HLM-H52H5



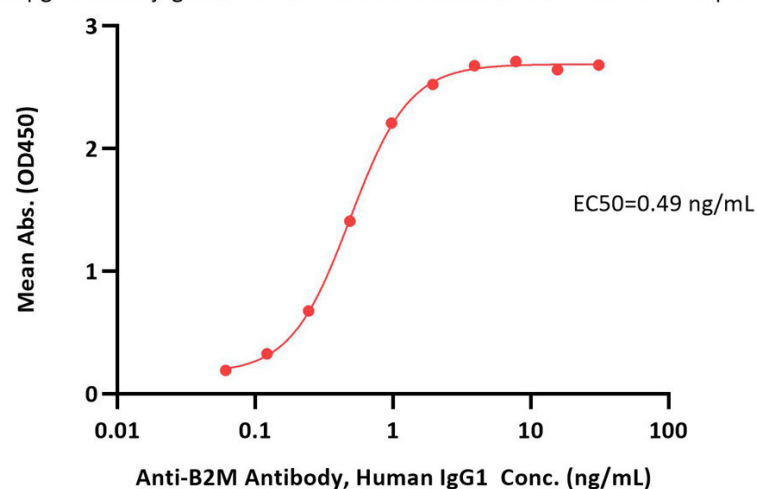
BIOSYSTEMS
Acro

Unconjugated Human HLA-A*02:01&B2M Monomer Protein ELISA
0.1 µg of Unconjugated Human HLA-A*02:01&B2M Monomer Protein per well



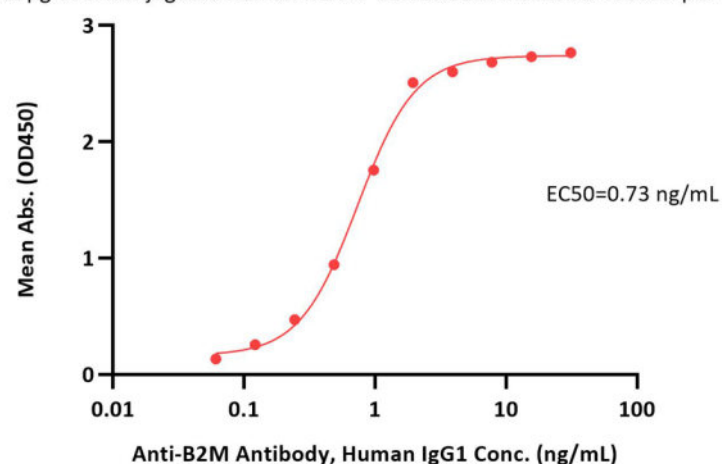
Immobilized Unconjugated Human HLA-A*02:01&B2M Monomer Protein (Cat. No. HLM-H52H5) at 1 µg/mL (100 µL/well) can bind Anti-HLA class I Antibody, Human IgG1 (W6/32) with a linear range of 0.5-4 ng/mL (QC tested).

Unconjugated Human HLA-A*02:01&B2M Monomer Protein ELISA
0.1 µg of Unconjugated Human HLA-A*02:01&B2M Monomer Protein per well



Immobilized Unconjugated Human HLA-A*02:01&B2M Monomer Protein (Cat. No. HLM-H52H5) at 1 µg/mL (100 µL/well) can bind Anti-B2M Antibody, Human IgG1 with a linear range of 0.1-1 ng/mL (Routinely tested).

Unconjugated Human HLA-A*02:01&B2M Monomer Protein ELISA
0.1 µg of Unconjugated Human HLA-A*02:01&B2M Monomer Protein per well



Immobilized Unconjugated Human HLA-A*02:01&B2M Monomer Protein (Cat. No. HLM-H52H5) at 1 µg/mL (100 µL/well) can bind Anti-B2M Antibody, Human IgG1 with a linear range of 0.1-2 ng/mL (Routinely tested).

Clinical and Translational Updates

Please contact us via TechSupport@acrobiosystems.com if you have any question on this product.

Discounts, Gifts,
and more!



www.acrobiosystems.com

11/21/2023