



## Synonym

IL-15,CD215

## Source

Human IL15RA & IL15 Protein, Fc Tag (N120D)(IL5-H5256) is expressed from human 293 cells (HEK293). It contains AA Ile 31 - Arg 95(IL15RA) & Asn 49 - Ser 162(IL15) (Accession # [Q13261-1](#) & [P40933-1](#)(N120D)).

Predicted N-terminus: Ile 31

## Molecular Characterization

This protein carries a human IgG1 Fc tag at the C-terminus.

The protein has a calculated MW of 48.0 kDa. The protein migrates as 53-63 kDa when calibrated against [Star Ribbon Pre-stained Protein Marker](#) under reducing (R) condition (SDS-PAGE) due to glycosylation.

## Endotoxin

Less than 1.0 EU per µg by the LAL method.

## Purity

>90% as determined by SDS-PAGE.

## Formulation

Lyophilized from 0.22 µm filtered solution in PBS, pH7.4 with trehalose as protectant.

Contact us for customized product form or formulation.

## Reconstitution

Please see Certificate of Analysis for specific instructions.

*For best performance, we strongly recommend you to follow the reconstitution protocol provided in the CoA.*

## Storage

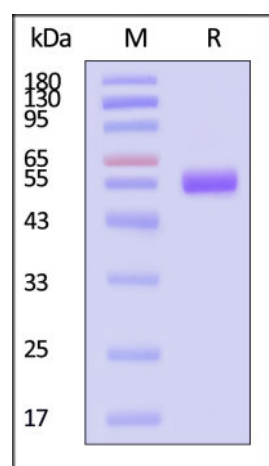
For long term storage, the product should be stored at lyophilized state at -20°C or lower.

*Please avoid repeated freeze-thaw cycles.*

This product is stable after storage at:

- -20°C to -70°C for 12 months in lyophilized state;
- -70°C for 3 months under sterile conditions after reconstitution.

## SDS-PAGE



Human IL15RA & IL15 Protein, Fc Tag (N120D) on SDS-PAGE under reducing (R) condition. The gel was stained with Coomassie Blue. The purity of the protein is greater than 90% (With [Star Ribbon Pre-stained Protein Marker](#)).

## Bioactivity-ELISA

Discounts, Gifts,  
and more!

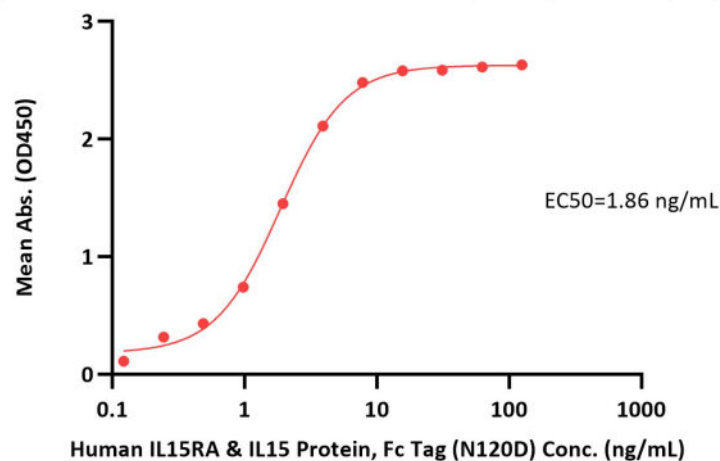


# Human IL15RA & IL15 Protein, Fc Tag (N120D)

Catalog # IL5-H5256



Human IL15RA & IL15 Protein, Fc Tag (N120D) ELISA  
0.2 µg of Human IL-2RB&IL-2RG Heterodimer Protein, His Tag&Twin-Strep Tag per well



Immobilized Human IL-2RB&IL-2RG Heterodimer Protein, His Tag&Twin-Strep Tag (Cat. No. ILG-H5283) at 2 µg/mL (100 µL/well) can bind Human IL15RA & IL15 Protein, Fc Tag (N120D) (Cat. No. IL5-H5256) with a linear range of 0.1-4 ng/mL (QC tested).

## Background

Interleukin-15 is a member of the four  $\alpha$  helix bundle family of cytokines. It plays a multifaceted role in the development and control of the immune system. The IL-15R consists of three polypeptides, the type-specific IL-15R $\alpha$ , the IL-2/IL-15R $\beta$ , and the common  $\gamma$ -chain ( $\gamma$ C), which is shared by multiple cytokine receptors. IL-15 could enhance the effect of chemotherapeutic agents and ACT on transplanted tumors, but had little or no effect when administered alone. The result of research shows that the biological activity of IL-15 could be increased ~50-fold by administering preformed complexes of IL-15 and its soluble receptor, IL-15R $\alpha$ .

## Clinical and Translational Updates

Discounts, Gifts,  
and more!

