



Synonym

IL2RB,RP5-1170K4.6,CD122,P70-75

Source

Cynomolgus IL-2 R beta Protein, Fc Tag(ILA-C5253) is expressed from human 293 cells (HEK293). It contains AA Ala 27 - Thr 240 (Accession # [Q38J85-1](#)).
Predicted N-terminus: Ala 27

Molecular Characterization

IL-2 R beta(Ala 27 - Thr 240) Q38J85-1	Fc(Pro 100 - Lys 330) P01857
---	---------------------------------

This protein carries a human IgG1 Fc tag at the C-terminus.

The protein has a calculated MW of 51.2 kDa. The protein migrates as 55-65 kDa when calibrated against [Star Ribbon Pre-stained Protein Marker](#) under reducing (R) condition (SDS-PAGE) due to glycosylation.

Endotoxin

Less than 1.0 EU per µg by the LAL method.

Purity

>90% as determined by SDS-PAGE.

Formulation

Lyophilized from 0.22 µm filtered solution in PBS, pH7.4 with trehalose as protectant.

Contact us for customized product form or formulation.

Reconstitution

Please see Certificate of Analysis for specific instructions.

For best performance, we strongly recommend you to follow the reconstitution protocol provided in the CoA.

Storage

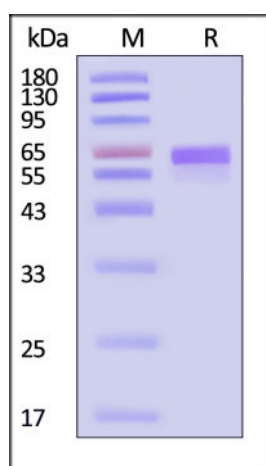
For long term storage, the product should be stored at lyophilized state at -20°C or lower.

Please avoid repeated freeze-thaw cycles.

This product is stable after storage at:

- -20°C to -70°C for 12 months in lyophilized state;
- -70°C for 3 months under sterile conditions after reconstitution.

SDS-PAGE

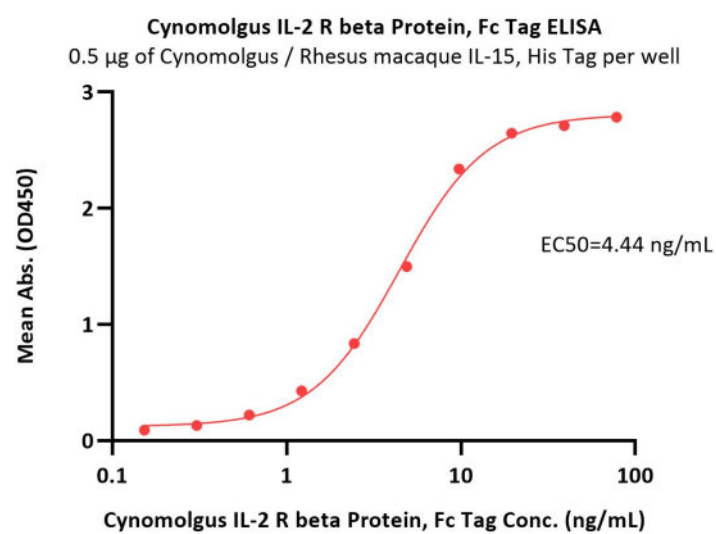


Cynomolgus IL-2 R beta Protein, Fc Tag on SDS-PAGE under reducing (R) condition. The gel was stained with Coomassie Blue. The purity of the protein is greater than 90% (With [Star Ribbon Pre-stained Protein Marker](#)).

Bioactivity-ELISA

Discounts, Gifts,
and more!





Immobilized Cynomolgus / Rhesus macaque IL-15, His Tag (Cat. No. IL5-C52H4) at 5 µg/mL (100 µL/well) can bind Cynomolgus IL-2 R beta Protein, Fc Tag (Cat. No. ILA-C5253) with a linear range of 0.2-10 ng/mL (QC tested).

Background

Interleukin-2 receptor (IL-2R) is a heterotrimeric protein expressed on the surface of certain immune cells, such as lymphocytes, that binds and responds to a cytokine called IL-2. The IL-2R is made up of 3 subunits - α (CD25), β (CD122) and γ (CD132) - non-covalently associating. The α and β chains are involved in binding IL-2, while signal transduction following cytokine interaction is carried out by the γ -chain, along with the β subunit.

CD122 is also known as IL2R beta, is a member of the type I cytokine receptor family. CD122 is the receptor for interleukin-2 and is involved in receptor mediated endocytosis and transduces the mitogenic signals of IL2.

Clinical and Translational Updates

Discounts, Gifts,
and more!

