



Synonym

KIAA1754L

Source

Human ITPRIPL1 Protein, Fc Tag(IT1-H5253) is expressed from human 293 cells (HEK293). It contains AA His 25 - Gly 103 (Accession # [Q6GPH6](#)).

Predicted N-terminus: His 25

Molecular Characterization

ITPRIPL1(His 25 - Gly 103) Q6GPH6	Fc(Pro 100 - Lys 330) P01857
--------------------------------------	---------------------------------

This protein carries a human IgG1 Fc tag at the C-terminus.

The protein has a calculated MW of 35.7 kDa. The protein migrates as 40-43 kDa when calibrated against [Star Ribbon Pre-stained Protein Marker](#) under reducing (R) condition (SDS-PAGE) due to glycosylation.

Endotoxin

Less than 1.0 EU per µg by the LAL method.

Purity

>90% as determined by SDS-PAGE.

Formulation

Lyophilized from 0.22 µm filtered solution in PBS, pH7.4 with trehalose as protectant.

Contact us for customized product form or formulation.

Reconstitution

Please see Certificate of Analysis for specific instructions.

For best performance, we strongly recommend you to follow the reconstitution protocol provided in the CoA.

Storage

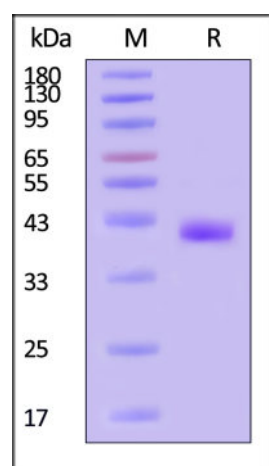
For long term storage, the product should be stored at lyophilized state at -20°C or lower.

Please avoid repeated freeze-thaw cycles.

This product is stable after storage at:

- -20°C to -70°C for 12 months in lyophilized state;
- -70°C for 3 months under sterile conditions after reconstitution.

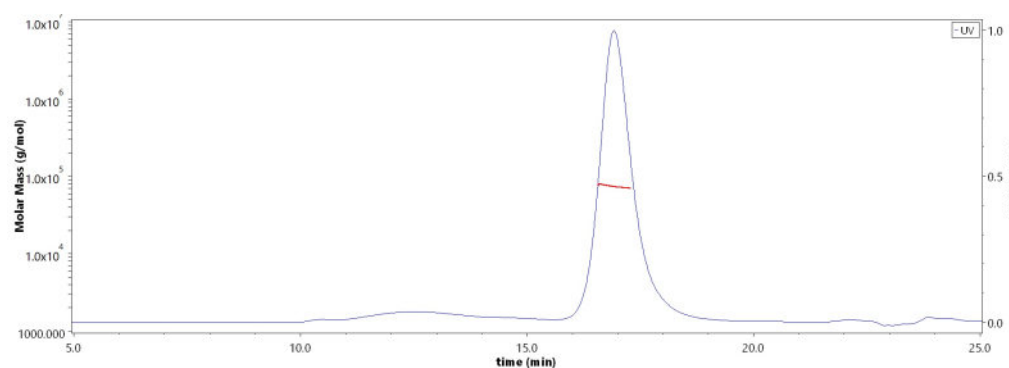
SDS-PAGE



Human ITPRIPL1 Protein, Fc Tag on SDS-PAGE under reducing (R) condition. The gel was stained with Coomassie Blue. The purity of the protein is greater than 90% (With [Star Ribbon Pre-stained Protein Marker](#)).

Bioactivity-ELISA

SEC-MALS

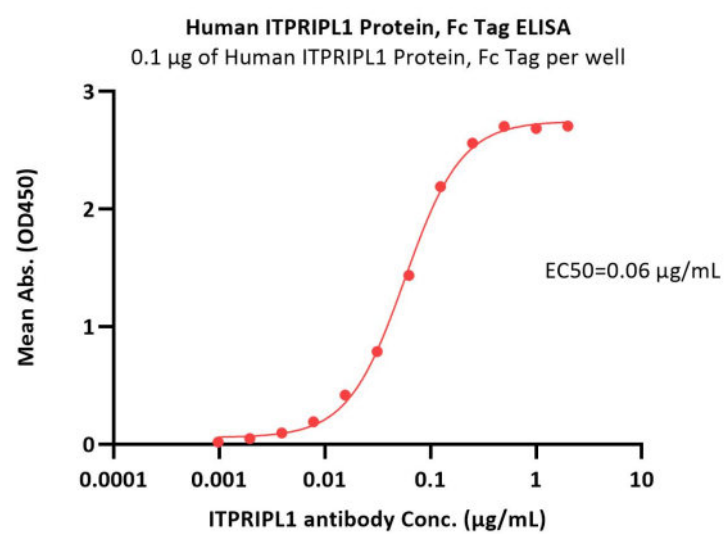


The purity of Human ITPRIPL1 Protein, Fc Tag (Cat. No. IT1-H5253) is more than 85% and the molecular weight of this protein is around 68-88 kDa verified by SEC-MALS.

[Report](#)

Discounts, Gifts,
and more!





Immobilized Human ITPRIPL1 Protein, Fc Tag (Cat. No. IT1-H5253) at 1 µg/mL (100 µL/well) can bind ITPRIPL1 antibody with a linear range of 0.001-0.125 µg/mL (QC tested).

Background

Inositol 1,4,5-triphosphate receptor interacting protein like 1 (ITPRIPL1) is a single transmembrane protein, exhibits normal testis-enriched expression and widespread overexpression in various human cancers. ITPRIPL1 is commonly found in tumors with low PD-L1 expression. ITPRIPL1 acts as a natural ligand for CD3 ε, evading immune surveillance, leading to decreased T cell activity and promoting tumor growth. Research has shown that inducing stable CD3E-NCK1 binding prevents CD3E-ZAP70 interaction, subsequently inhibiting downstream ERK-NFκB signaling cascade and calcium influx activation.

Clinical and Translational Updates

Discounts, Gifts,
and more!

