



## Synonym

KIAA1754L

## Source

Human ITPRIPL1 Protein, His Tag(IT1-H52H3) is expressed from human 293 cells (HEK293). It contains AA His 25 - Gly 103 (Accession # [Q6GPH6](#)).

Predicted N-terminus: His 25

## Molecular Characterization

ITPRIPL1(His 25 - Gly 103)  
Q6GPH6 Poly-his

This protein carries a polyhistidine tag at the C-terminus.

The protein has a calculated MW of 11.2 kDa. The protein migrates as 11 kDa and 13 kDa when calibrated against [Star Ribbon Pre-stained Protein Marker](#) under reducing (R) condition (SDS-PAGE) due to glycosylation.

## Endotoxin

Less than 1.0 EU per µg by the LAL method.

## Purity

>90% as determined by SDS-PAGE.

## Formulation

Lyophilized from 0.22 µm filtered solution in PBS, pH7.4 with trehalose as protectant.

Contact us for customized product form or formulation.

## Reconstitution

Please see Certificate of Analysis for specific instructions.

*For best performance, we strongly recommend you to follow the reconstitution protocol provided in the CoA.*

## Storage

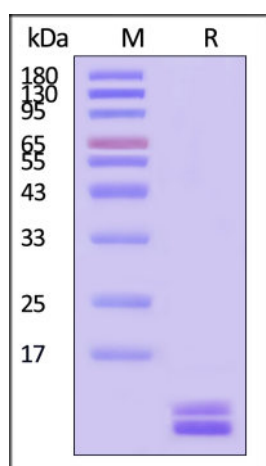
For long term storage, the product should be stored at lyophilized state at -20°C or lower.

*Please avoid repeated freeze-thaw cycles.*

This product is stable after storage at:

- -20°C to -70°C for 12 months in lyophilized state;
- -70°C for 3 months under sterile conditions after reconstitution.

## SDS-PAGE

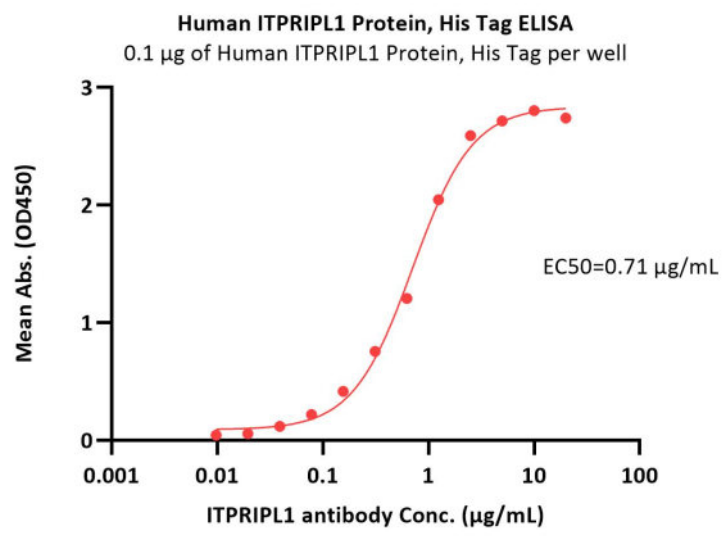


Human ITPRIPL1 Protein, His Tag on SDS-PAGE under reducing (R) condition. The gel was stained with Coomassie Blue. The purity of the protein is greater than 90% (With [Star Ribbon Pre-stained Protein Marker](#)).

## Bioactivity-ELISA

Discounts, Gifts,  
and more!





Immobilized Human ITPRIPL1 Protein, His Tag (Cat. No. IT1-H52H3) at 1 µg/mL (100 µL/well) can bind ITPRIPL1 antibody with a linear range of 0.01-1.25 µg/mL (QC tested).

## Background

Inositol 1,4,5-triphosphate receptor interacting protein like 1 (ITPRIPL1) is a single transmembrane protein, exhibits normal testis-enriched expression and widespread overexpression in various human cancers. ITPRIPL1 is commonly found in tumors with low PD-L1 expression. ITPRIPL1 acts as a natural ligand for CD3 ε, evading immune surveillance, leading to decreased T cell activity and promoting tumor growth. Research has shown that inducing stable CD3E-NCK1 binding prevents CD3E-ZAP70 interaction, subsequently inhibiting downstream ERK-NFκB signaling cascade and calcium influx activation.

## Clinical and Translational Updates

Discounts, Gifts,  
and more!

