

## SUMO Protease (active enzyme)

Catalog # SUE-S5127



BIOSYSTEMS  
**Acro**  
Surprise Inside!

### Product Details

SUMO Protease is a recombinant form of *Saccharomyces cerevisiae* protease produced in *Escherichia coli*. SUMO protease can recognize the SUMO tertiary structure and cleave it, has high specificity, and there would be no amino acid residues. This product contains His-tag which can be removed by Ni<sup>2+</sup> affinity chromatography resin.

### Application

Remove SUMO-tag in any recombinant SUMO fusion protein.

### Unit Definition

One unit of SUMO Protease cleaves  $\geq 85\%$  of 2  $\mu\text{g}$  control substrate in 1 h at 30°C.

### Purity

>95% as determined by SDS-PAGE.

### Enzyme Activity

>10 U/ $\mu\text{L}$

### Endotoxin

Less than 0.2 EU per  $\mu\text{g}$  by the LAL method.

### Formulation

Supplied as 0.2  $\mu\text{m}$  filtered solution in 25 mM Tris-HCl, 0.1% Igepal (NP-40), 250 mM NaCl, 500  $\mu\text{M}$  DTT, pH 8.0 with glycerol as protectant.

Contact us for customized product form or formulation.

### Shipping

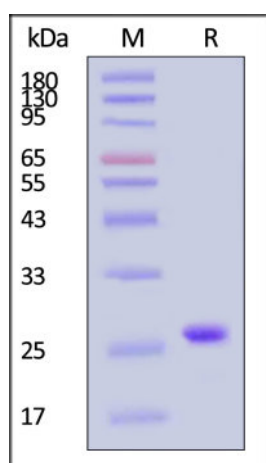
*This product is supplied and shipped with blue ice, please inquire the shipping cost.*

### Storage

This product is stable after storage at:

- The product **MUST** be stored at -20°C or lower upon receipt.
- -20°C for 3 months under sterile conditions.

### SDS-PAGE



The gel was stained with Coomassie Blue. The purity of the protein is greater than 95% (With [Star Ribbon Pre-stained Protein Marker](#)).

### Bioactivity

One unit of SUMO Protease cleaves  $\geq 85\%$  of 2  $\mu\text{g}$  control substrate in 1 h at 30°C.

### Clinical and Translational Updates

Discounts, Gifts,  
and more!



➤ [www.acrobiosystems.com](http://www.acrobiosystems.com)

6/25/2024