

Synonym

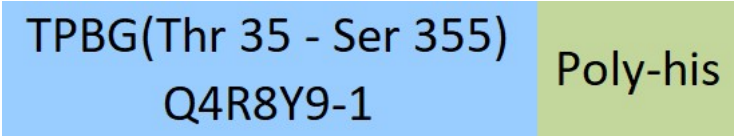
TPBG,5T4,M6P1,5T4AG,WAIF1,5T4 oncofetal antigen,Trophoblast glycoprotein,5T4 oncofetal trophoblast glycoprotein

Source

Cynomolgus / Rhesus macaque TPBG, His Tag(TPG-C52H3) is expressed from human 293 cells (HEK293). It contains AA Thr 35 - Ser 355 (Accession # [Q4R8Y9-1](#) ).

Predicted N-terminus: Thr 35

Molecular Characterization



This protein carries a polyhistidine tag at the C-terminus.

The protein has a calculated MW of 36.7 kDa. The protein migrates as 55-65 kDa under reducing (R) condition (SDS-PAGE) due to glycosylation.

Endotoxin

Less than 1.0 EU per µg by the LAL method.

Purity

>95% as determined by SDS-PAGE.

Formulation

Lyophilized from 0.22 µm filtered solution in PBS, pH7.4 with trehalose as protectant.

Contact us for customized product form or formulation.

Reconstitution

Please see Certificate of Analysis for specific instructions.

*For best performance, we strongly recommend you to follow the reconstitution protocol provided in the CoA.*

Storage

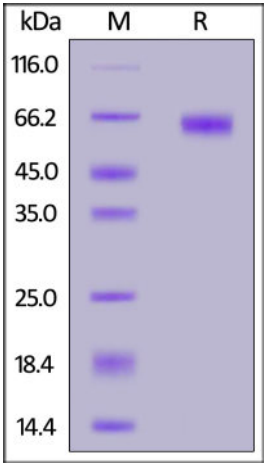
For long term storage, the product should be stored at lyophilized state at -20°C or lower.

*Please avoid repeated freeze-thaw cycles.*

This product is stable after storage at:

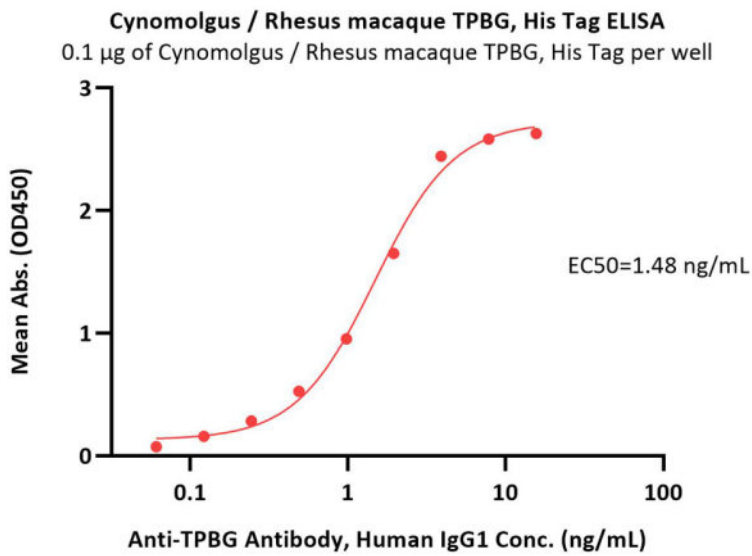
- 20°C to -70°C for 12 months in lyophilized state;
- 70°C for 3 months under sterile conditions after reconstitution.

SDS-PAGE



Cynomolgus / Rhesus macaque TPBG, His Tag on SDS-PAGE under reducing (R) condition. The gel was stained with Coomassie Blue. The purity of the protein is greater than 95%.

Bioactivity-ELISA



Immobilized Cynomolgus / Rhesus macaque TPBG, His Tag (Cat. No. TPG-C52H3) at 1 µg/mL (100 µL/well) can bind Anti-TPBG Antibody, Human IgG1 with a linear range of 0.1-4 ng/mL (QC tested).

Background

Trophoblast glycoprotein (TPBG), also known as 5T4, is the therapeutic target of several anticancer agents currently in clinical development, largely due to its high expression in tumors and low expression in normal adult tissues. This gene encodes a leucine-rich transmembrane glycoprotein that may be involved in cell adhesion. TPBG is expressed by all types of trophoblasts as early as 9 weeks of development.

Clinical and Translational Updates

Please contact us via [TechSupport@acrobiosystems.com](mailto:TechSupport@acrobiosystems.com) if you have any question on this product.